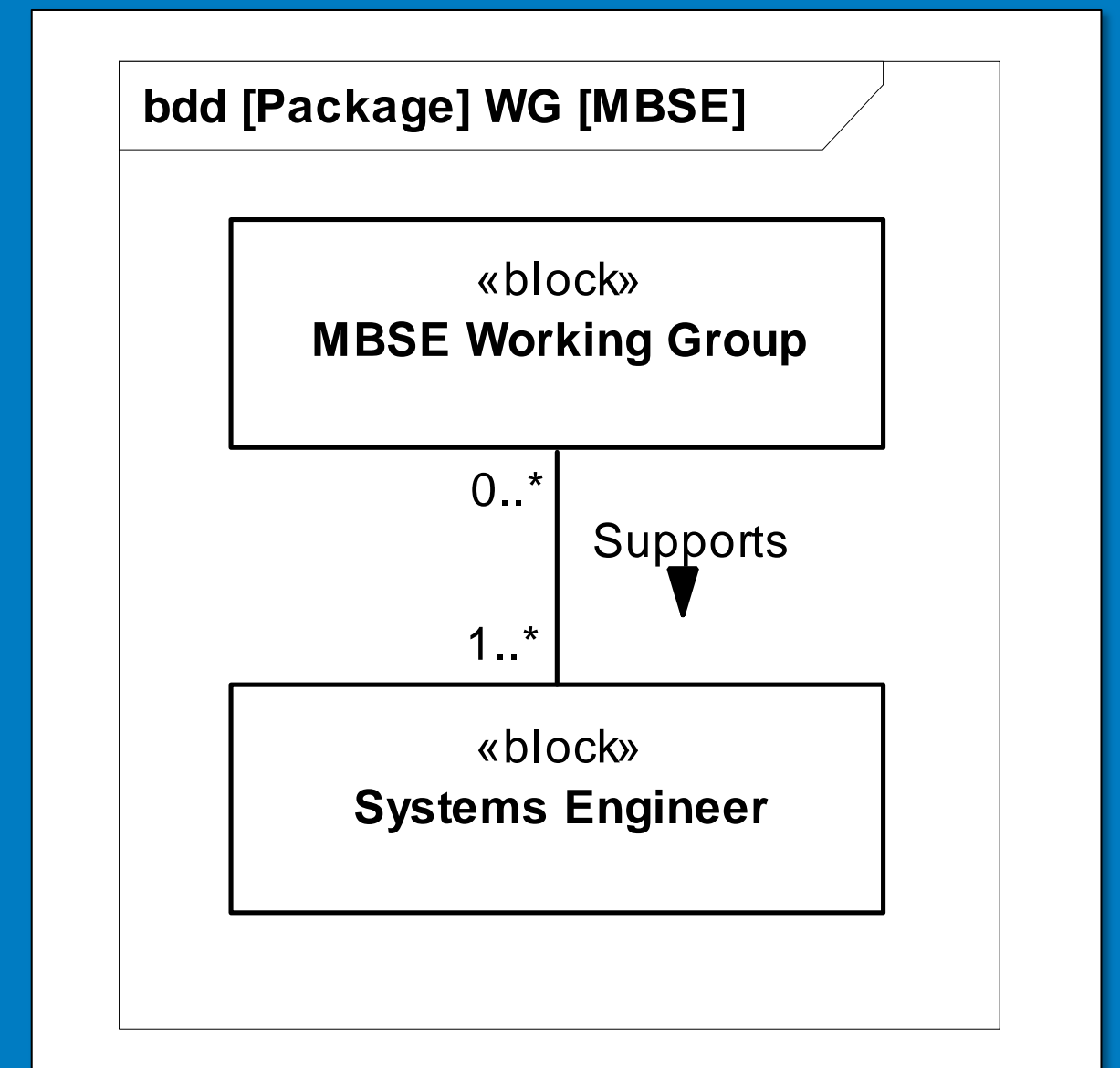




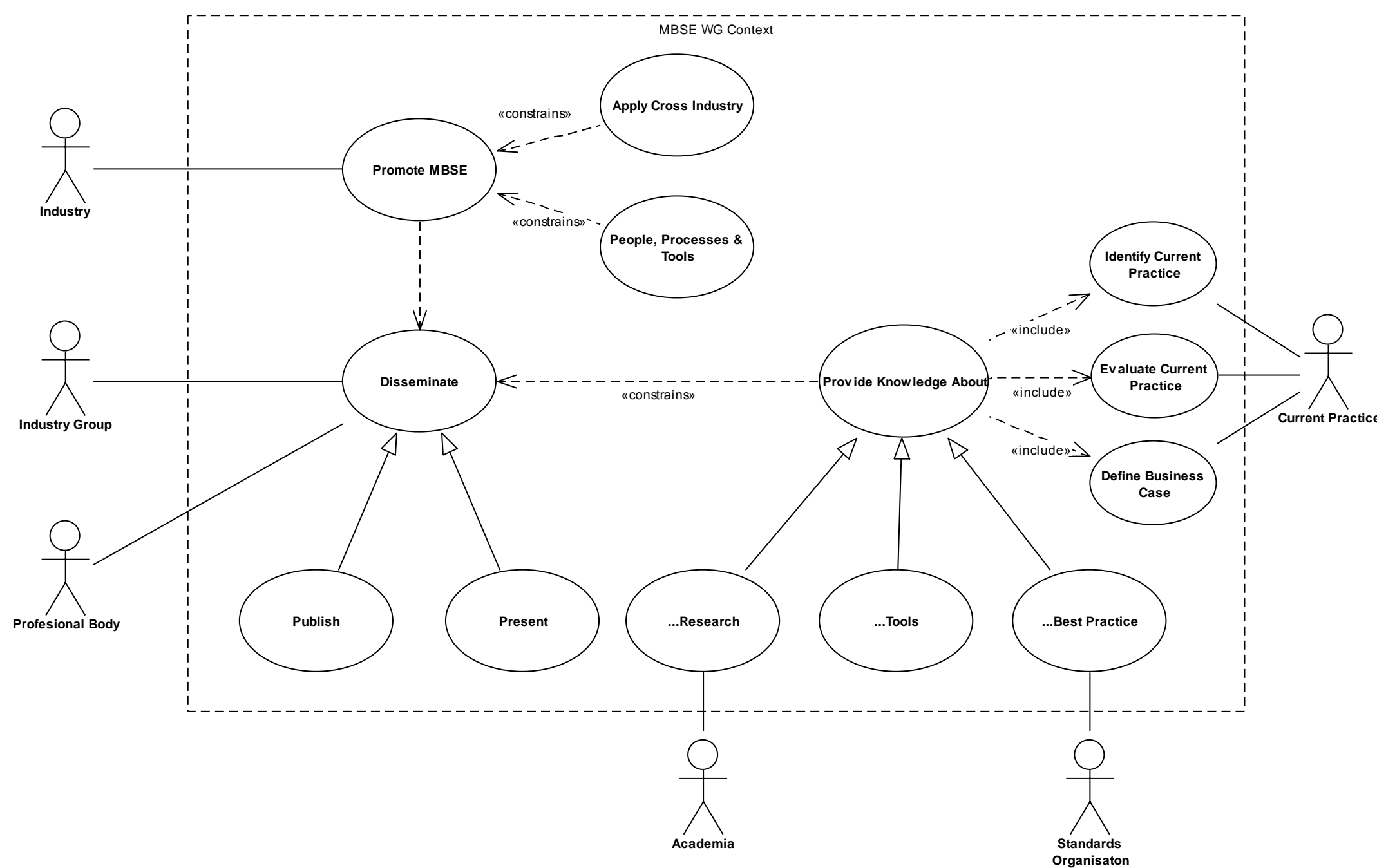
# Model-Based Systems Engineering Working Group



## Introduction

The Model-Based Systems Engineering working group was formed in 2012 to explore, understand and facilitate the growing use of the formalised application of modelling within the UK Systems Engineering community.

Name: MBSE WG Context (Syndicate Group)  
Author: Camm, Capel, Fletcher, Holt & Older  
Version: 1.0  
Created: 01/02/2013 17:16:33  
Updated: 02/10/2013 12:39:58



## Core Objectives

The objectives of the MBSE Working Group are to:

- Promote the use and understanding of MBSE
- Facilitate and improve communication between system engineers practicing MBSE
- Identify and catalogue the Tools, Techniques and Languages used
- Provide guidance on how to best apply MBSE techniques across the lifecycle
- Support the MBSE Initiative run by INCOSE Central and the Object Management Group (OMG), and
- Promote Science, Technology, Engineering & Mathematics (STEM) Education

## Current Activities

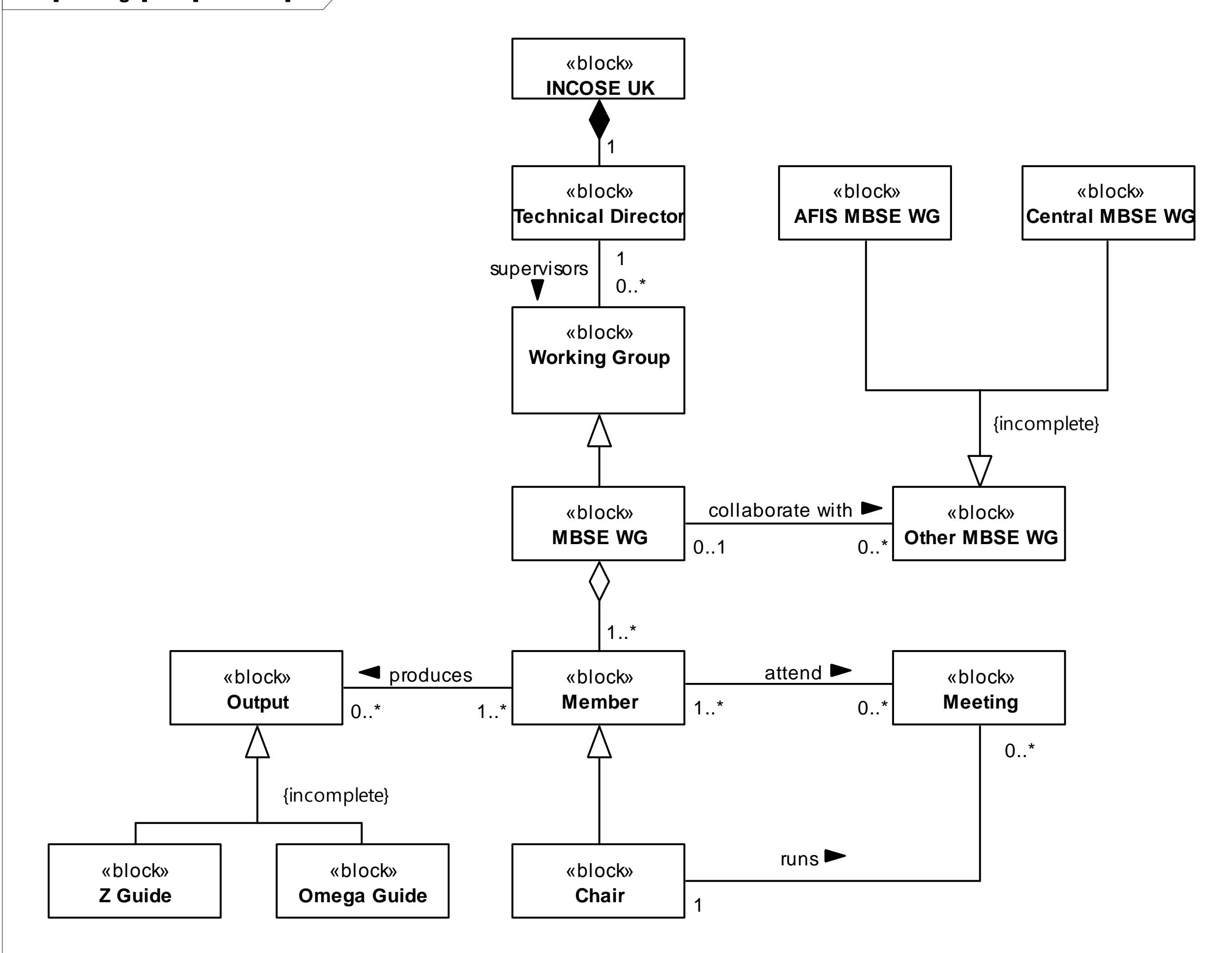
- Collate case studies and other evidence for an MBSE Business Case
- Catalogue MBSE Languages, Tools and Processes
- Production of an MBSE Omega Guide
- Document MBSE Patterns
- Organise and/or participate in STEM Education events
- Form links with other INCOSE chapters in EMEA interested in MBSE

## Overview

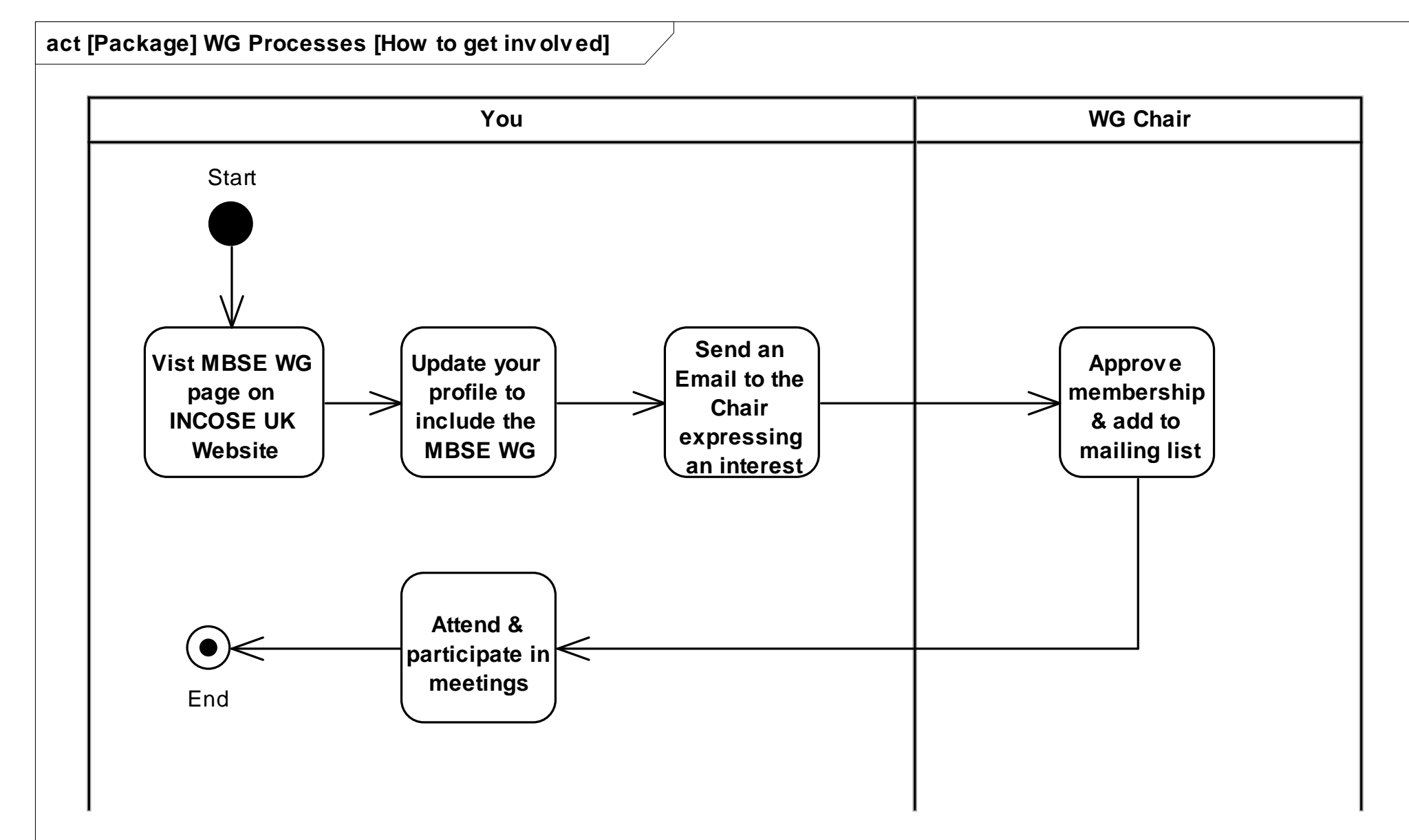
The group aims to hold up to 5 meetings a year, each one lasting a day and hosted by one of our member's employers. We use these meetings for reporting, planning, decision making and running workshops. The majority of our output is generated outside of these meetings by individual members or sub-groups working in their own time.

All members are encouraged to suggest activities and outputs which contribute to the objectives of the group. If there's any aspect of MBSE which you would like to see the group address then we would welcome your participation.

bdd [Package] WG [Structure]



## How to get Involved



Further information can be found online at [incoseonline.org.uk](http://incoseonline.org.uk) or by contacting the chair [james.towers@scarecrowconsultants.co.uk](mailto:james.towers@scarecrowconsultants.co.uk)

You can also find out about the MBSE initiative run by INCOSE and the OMG at [www.omgwiki.org/MBSE/](http://www.omgwiki.org/MBSE/)